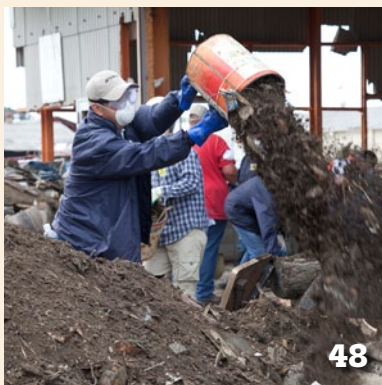
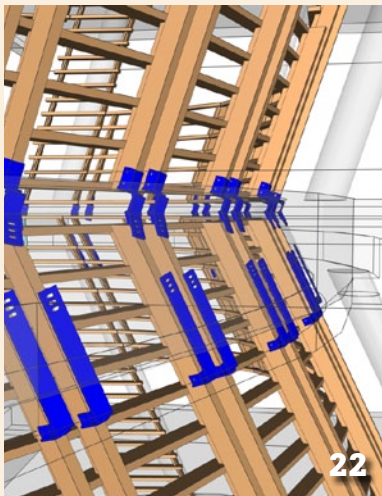


Contents

On the Cover



Penfield & Smith, a Santa Barbara, CA firm, applies surveying technology to rockets.



Features

- 10** **Surveying Rockets—Launch Vehicle Alignment Survey**
An unusual survey task at Vandenberg Air Force Base revealed previous errors in alignment.
By Justin Height, PS
- 18** **Frames for the Future—New Datum Definitions for Modernization of the U.S. National Spatial Reference System**
In Part 2, NGS experts discuss the replacement of NAVD 88 and the role of geoid models.
David H. Minkel and Michael L. Dennis
- 22** **A Well-Crafted Connection**
The installment of an 8-story metal and wood atrium shows the collaborative potential of interconnected BIM-to-field solutions and expert engineering.
Vicki Speed
- 36** **A Small Oregon City Makes Huge GIS Strides**
Through the use of laser scanning, this small town has developed the state's most comprehensive 3D geodatabase.
Larry Trojak
- 48** **Topcon Volunteers Lend Physical and Moral Support to Japan Recovery**
Not content with just donating money, 12 Topcon Positioning employees travel from California to Japan to help with cleanup efforts.
Don Talend

Departments

- 43** **Vantage Point: Helping Floodville**
Our FEMA expert examines the impact Elevation Certificates have on people's lives.
By Wendy Lathrop, PS, CFM
- 46** **Product Spotlight: HP50g**
Our product reviewer takes a look at this popular workhorse.
Shawn Billing, PS
- 56** **Footsteps: 10 Best Practices for Very Large Boundary Surveys**
Large boundary surveys come with additional challenges for boundary research and data management.
By Landon Blake, PS

In This Issue

- 6** **Editor's Corner: User Conferences**
The editor attends the Vexcel user meeting and the FARO user conference.
By Marc Cheves, PS
- 52** **Advertisers' Directory**
- 53** **MarketPlace**