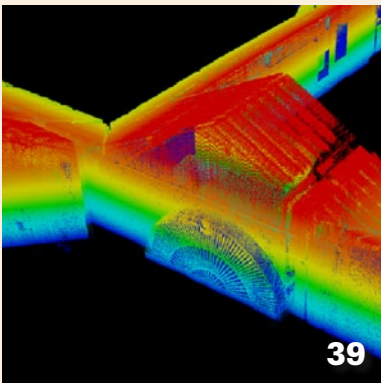


Contents

On the Cover



Roger Woodfill, administrator of the Surveyors Historical Society, fulfills a long-held dream to scale a Bilby. The Louisiana tower is reportedly one of two known Bilbys still standing in the United States.



Features

- 8** **Mr. Bilby's Elegant Assembly, Being both Elegant and Sublime**
Long before GNSS, triangulation angle-turners had to take to the air.
By C. Barton Crattie, LS, CFM
- 19** **Star Crossing & Stone Monuments**
The USGS releases a circular about early-day control surveying in Colorado.
By J. B. Guyton, LS
- 22** **The Story of a Stone**
Metes and bounds Colonial states still depend on stone monuments set long ago.
By Timothy S. Guisewhite, LS
- 39** **Mapping Interior Spaces with Speed, Ease & Accuracy**
A growing market—with opportunities for surveyors—is served by the Applanix TIMMS.
By Peter Canter and Andrew Stott
- 56** **Broadband vs. GPS**
Do not panic, but be prepared to panic.
By Gavin Schrock, LS

Departments

- 47** **GIS Matters: Point Data as GIS Features—ASCII**
Continuing with our series on how surveyors can become involved in GIS.
By Rj Zimmer, LS
- 50** **Footsteps: Claudino v. Pereira**
This 2008 California case may have application across the country.
By Landon Blake, LS

In This Issue

- 6** **Editor's Corner: Angular Accuracy**
By Marc Cheves, LS
- 44** **Vantage Point: Signs of the Times**
By Wendy Lathrop, LS, CFM
- 49** **Advertisers' Directory**
- 53** **MarketPlace**



**>>> Are You Receiving Our eNewsletter?
Subscribe @ www.amerisurv.com**