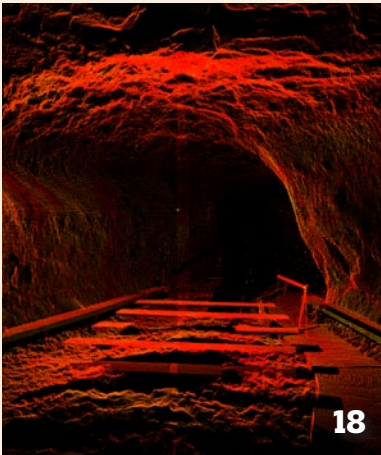


Contents

On the Cover



It was not unusual in 1944 for crew members of CG&S CPS-98 to leave their trucks and begin back packing to a remote station, this one in the Sangre de Cristo Mountains of New Mexico.



Features

- 10** **CPS-98—An Odd Geodetic Survey Crew**
During WWII, conscientious objectors admirably served on Coast & Geodetic Survey crews.
By Albert E. Theberge, Jr.
- 18** **Scanning Mushpot Cave**
A team of Oregon Institute of Technology students puts classroom instruction to the test at Lava Beds National Monument.
By David McIntire, LSIT
- 28** **Coping with Tectonic Motion**
Using GNSS and NGS' Horizontal Time-Dependent Positioning to detect movement in continental plates.
By Richard Snay and Chris Pearson
- 44** **Rendezvous 2010 Recap**
A grand time it was in and around the historic *Delta Queen* river boat in Chattanooga.
By C. Barton Crattie, LS, CFM
- 52** **Real Time GNSS Network in New Mexico**
Albuquerque's ARTGN has been making surveyors jobs easier, more accurate and more cost effective.
By Cliff Wilkie, LS

Departments

- 59** **Surveyors Report:
All It Takes Is You**
Missouri surveyors lend time and talents with public outreach at the annual State Fair.
By Chris Wickern, LS

In This Issue

- 6** **Editor's Corner:
Winds of Change**
By Marc Cheves, LS
- 50** **Vantage Point:
Crawlspaces
or Basements?**
By Wendy Lathrop, LS, CFM
- 60** **Advertisers' Directory**
- 61** **MarketPlace**



**>>> Are You Receiving Our eNewsletter?
Subscribe @ www.amerisurv.com**