

Contents

On the Cover

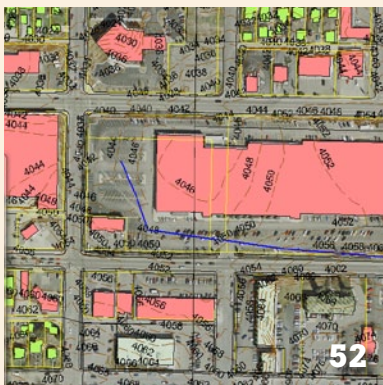


12

A handheld GPS is used to locate the Arctic Circle. In the background is the Dalton Highway of Ice Road Truckers fame. Photo by Eric Stahlke.



20



52

Features

- 12 Just Say You've Been There**
Even surveyors have assumed the Arctic Circle is a fixed line of latitude on the surface of the earth. Not so.
By Eric Stahlke, LS, CFedS
- 20 Hard Work, Miserable Conditions—**
Surveying Tennessee's Cumberland Trail
Even though the title sounds grim, what surveyor wouldn't relish the thought of getting paid to camp out?
By Brad Longstreet
- 27 Another Coordinate System—**
This Time Without Survey Marks
As NGS prepares for the future, the former NGS Director addresses a few implementation questions.
By Lewis A. Lapine, PhD, LS

Departments

- 10 New Tech Showcase:**
Environment Analysis
from JAVAD GNSS
and
MOVE3 Moves to the
U.S. Survey Market
- 40 Product Review: Nikon Nivo C**
Our reviewer comes up with an intriguing use for this full-featured, compact instrument.
By Shawn Billings, LS

In This Issue

- 6 Guest Editorial:**
The Sky Refuses to Fall—
GPS is NOT Dead!
By Gavin Schrock, LS
- 50 Vantage Point: Misperceptions**
By Wendy Lathrop, LS, CFM
- 52 GIS Matters:**
Something for Nothing
By Rj Zimmer, LS
- 64 Reconnaissance: Society**
Committees Adopt Draft
of New 2011 ALTA/ACSM
Survey Standards
By Gary Kent, LS
- 61 Advertisers' Directory**
- 62 MarketPlace**



>>> Are You Receiving Our eNewsletter?
Subscribe @ www.amerisurv.com