

# contents

## ON THE COVER

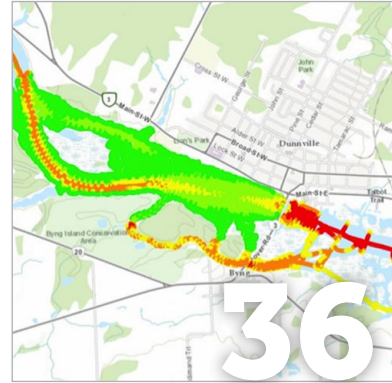


4

Iconic ±30 year old black oak (*Quercus velutina*) in Frederick, Maryland.



16



36

## features

## in this issue

**4 I Hope I Will Never See a Forest Tree That Will Baffle Me**  
One of our eminent statesmen recalls his interaction with trees over the decades.  
WALT ROBILLARD, PS, ESQ.

**30 Dig This—GPS Technology Co-stars on the Television Show *Diggers***  
This popular program employs our technology to make a record of what was found.  
MARY JO WAGNER

**2 Thought Leader: Globalized Ethics**  
Because real estate represents a significant proportion of all global wealth, professionals have a duty to uphold the highest standards.  
ROBERT W. FOSTER, PS, PE

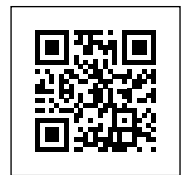
**8 Comparing Two Brickkilns**  
A passion for many surveyors is recovering monuments that have disappeared from the modern record.  
JERRY PENRY, PS

**36 Network Brings 'Life' to Bathymetric Survey Boat**  
A GNSS network enables a surveyor to accurately position his data-gathering vehicle.  
DOUGLAS HUNT, OLS

**44 MarketPlace**

**16 Some Part of Myself**  
From a childhood in Nazi Germany, this American immigrant recounts his path through a successful career.  
WILFRIED "FRED" ROEDER, PS

**40 The Final Voyage—Part 10**  
If things went according to plan we would be finished in three weeks. But things didn't go according to plan.  
ERIC STAHLKE, PS



**AmeriSurv To Go!**  
Get the most from this magazine on your tablet or laptop.

## departments

**46 Test Yourself 32: Equal Incircle/Excircle**  
Exercising geometry and trigonometry skills.  
DAVE LINDELL, PS

**47 The Curt Brown Chronicles: Surveyors Model Registration**  
From 1967... it was only a matter of time until licensed surveyors would be forced into defensive activities or extermination...  
COMPILED BY MICHAEL J. PALLAMARY, PS

**48 Vantage Point: Past and Future in a More Frequently Inundated World**  
As our FEMA expert explains, there are no easy solutions, but innovation will be the key.  
WENDY LATHROP, PS, CFM