

LINCOLN COUNTY
CORNER CONDITION REPORT

C.S. # 12467
FILED 24 April 1989
LINCOLN COUNTY SURVEYOR

CORNER TO SECTIONS 11, 12, 13, & 14., T11S., R11W, W.M.

PAGE 1 OF 2

1870 G. Mercer Contract #134

Set: A Stake; from which:
A 8" fir bears S.20°W., 59 links(38.94').
A 10" fir bears S.20°E., 90 links(59.4').
A 10" fir bears N.65°W., 20 links(13.2').
A 6" fir bears N.50°E., 105 links(69.3').

1888 - 1890 Andy Porter Pg. 131

Set: A post.
The Northwest and Northeast trees are gone.
The Southwest and Southeast trees are in good shape.

1951 O. Castle Old Yellow Field Book #193, Pg. 45

Ties to corner.

1951 Oregon State Highway Department Drawing 7B-10-8

Found: Corner.

1954 W.W. Jones C.S. 601

Found: Iron Rod.

1955 R.D. Wilkinson C.S. 626

Found: A 5/8" bolt: from which;
A fir stump bears S.20°W.(original).
Marked: A 8" hemlock scribed "S13 BTCS" bears S.1°E., 85.2'.

1969 Stam & Crang C.S. 6610

Found: A bolt: from which;
An 18" hemlock with scribes "BT" visible bears S.1°E. 83.59'.
Set: A 1" galvanized pipe, 3' long with brass cap; from which,
A bolt reset as a reference bears Southwest 0.5'.
An 18" fir scribed "S11 T11S R11W BT" bears N.31°20'W., 14.8'.
A 13" spruce scribed "S12 T11S R11W BT" bears N.63°E., 33.25'.

1975 A. Brubaker C.S. 6278

Found: Brass cap and bolt.

1975 H.L. Kennedy C.S. 7097

Found: Bolt and iron pipe with brass cap.

1977 P.J. Larson C.S. 7263

Found: "Lincoln County iron pipe with brass cap 0.2' Northeast of 3/4" bolt in South edge of Northwest Natural Gas pipe-line spoils".

1978 J.W. Hanna C.S. 7868

Found: brass cap; from which:
An 18" hemlock bears S.1°E., 83.59'.
A 4" steel pipe gate-post filled with concrete bears N.41°E., 50.3'.
A 5" spruce bears N.49°W., 62.2'.
Set: A steel fence post alongside corner.

1982 R.W. Fail C.S. 10,006

Found: 5/8" bolt; from which:
An 8" hemlock bears S.1°E., 85.2'.

1984 C.S. 10,515

1986 C. A. Denison C.S. 11,201

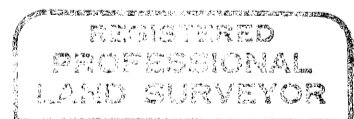
Found: Lincoln County brass cap and bolt alongside.

1984 R. W. Fail C.S. 10,583

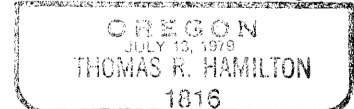
Found: Lincoln County brass cap.

1988 J.M. Denison C.S. 11,973

Found: 1/2" axle on gas line grade with bearing trees in place



Tom Hamilton



LINCOLN COUNTY
CORNER CONDITION REPORT

C.S. # 12467
FILED 24 April 1989
LINCOLN COUNTY SURVEYOR

CORNER TO SECTIONS 11, 12, 13, & 14, T11S., R11W., W.M.

PAGE 2 OF 2

Lincoln County Surveyor's Office visited corner March 1989

Found: A firmly set 2-1/2" brass cap, apparently out of position with reference to a fir snag with probable face to the Southwest, 0.6' below the surface on the South edge of the gas line grade; from which:

- A 1-1/4" bolt head bears Southwest, 0.2'.
- A red and white metal fence post, 3.8' high, bears S.6°E., 0.9'.
- A 1-1/2" square, white wooden post, 1.2' high, bears South, 0.7'.
- A 20" fir snag, 2.5' high, with a probable face bears S.36°W., 43.9'.
- A 20" hemlock stump, 2' high, with no marks visible bears S.3°W., 83.9'.
- A 4-1/2" metal gate post, 4.5' high, filled with concrete, and a Lincoln County Tag bears N.34°E., 49.8'.
- A 17" spruce, with no marks visible, and a Lincoln County Tag bears N.38°W., 62.4'.

New: The 20" fir snag was sawn open to reveal scribe marks "S13 BT" on a double-blazed 6" core.

A new 2" iron pipe, 3' long, with a 2-1/2" brass cap, marked as shown, protruding 1.5' above the surface, was set in concrete on the gas line grade at a point that is N.20°W., 59.4' from the original fir snag.

From the brass cap:

- A 17" spruce, scribed "T11S R11W S11 BT" on a double-blaze, bears N.2°W., 22.3'. Note: same as Hanna's Northwest B.T.
- A 4-1/2" gatepost, 4.5' high, filled with concrete bears N.76°E., 80.2'. Note: same as Hanna's Northeast B.O.
- A 2-1/2" brass cap bears S.66°E., 49.9' (Lincoln County 1969).
- A 13" spruce, scribed "T11S R11W S11 BT" on a double blaze, bears N.78°W., 53.9'.

A GPS RM was set to the Southeast for future use.

A carsonite post was set 2.0' North of the corner.

A carsonite post with Lincoln County tag was set 586'+ Northerly on the South edge of Highway 20.

An orange-painted band and Lincoln County tag were placed on all bearing trees or objects, and in addition, a brass washer marked "PLS 1816" was placed between the "B" and "T" in the scribing of the new bearing trees.

The brass cap was set from the original snag with a staff compass, declination 20° East. All other bearings were determined by hand compass. Distances were measured using a 100' tape and clinometer.

Conclusion: This corner is a perpetuation of the original. In 1955, Wilkinson, (C.S. # 626) found a bolt that was apparently set from the original Southwest bearing tree. This position was remonumented by Lincoln County in 1969 (C.S. # 6610) and in 1978 (C.S. # 7868).

At some point in time, probably during the gas line construction this position was apparently disturbed in relation to the original fir snag. During the course of this survey the original bearing tree was opened up to reveal that it was in fact the Southeast instead of the Southwest tree. The corner was then remonumented accordingly.

APRIL 21, 1989

NOT TO SCALE

Witnesses: Duke Dexter

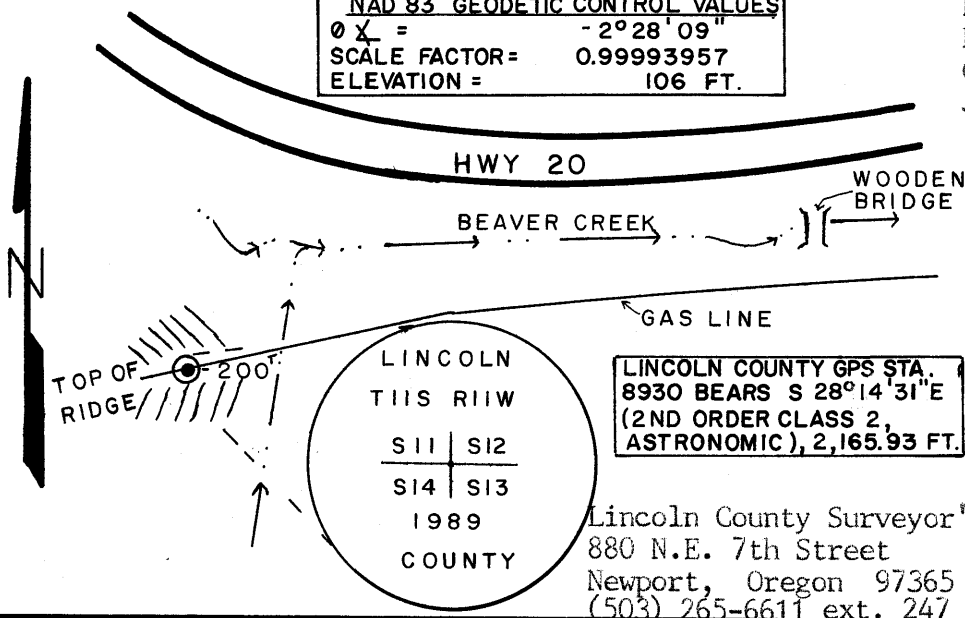
NAD 83 GEODETIC CONTROL VALUES	
∠ X =	-2°28'09"
SCALE FACTOR =	0.99993957
ELEVATION =	106 FT.

Neal Myers

Brad Myres

Gary Nyhus

John Waffenschmidt



REGISTERED
PROFESSIONAL
LAND SURVEYOR

Tom Hamilton
OREGON
JULY 13, 1979
THOMAS R. HAMILTON
1816

Lincoln County Surveyor's Office
880 N.E. 7th Street
Newport, Oregon 97365
(503) 265-6611 ext. 247