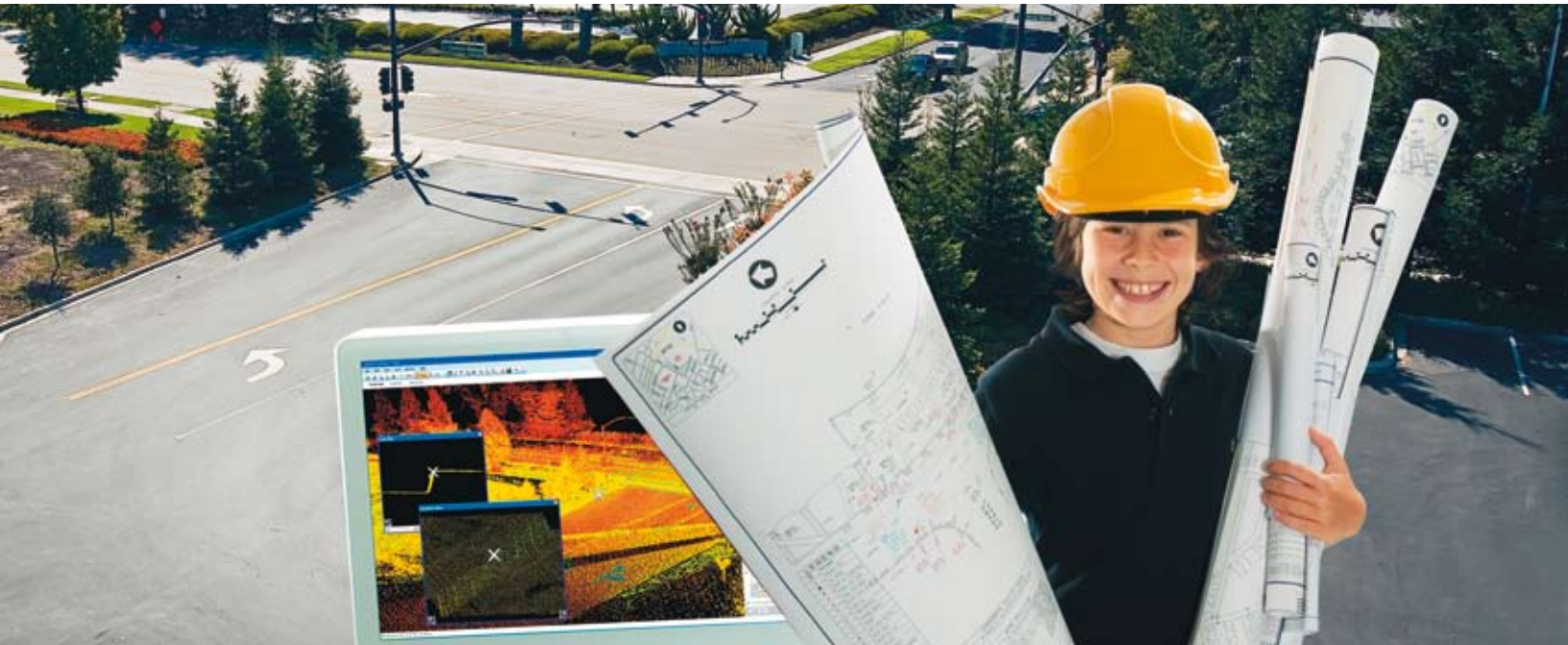


# Leica Cyclone II TOPO

## Fast Mapping from Laser Scans... for Everyone!



**Breakthrough Leica Cyclone II TOPO software lets any survey CAD technician quickly create accurate topographic maps from rich point cloud data.**

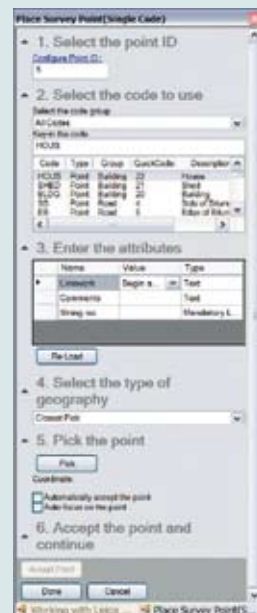
The next-generation software overcomes the final obstacle for taking full advantage of the compelling benefits of High-Definition Surveying™ (HDS™): making office work easy. Cyclone II TOPO is a dramatic leap forward over the challenging process of 3D navigation and viewing of point clouds.

Now, CAD techs don't have to be 3D or laser scanning specialists to produce maps from point cloud data as fast as or faster than using conventional survey data. The learning curve is short and map creation is fast and accurate. To achieve this in Cyclone II TOPO, Leica Geosystems has combined major point cloud software innovations – in friendliness and automation – with the familiarity of standard CAD tech 2D mapping tools and terminology.

### Fast, Easy, Accurate Field-to-Finish

- Familiar 2D plan view or friendly perspective view as the primary work area
- Clicking on a point in plan view automatically displays corresponding isometric and section views – all arrayed on a single screen
- Each, automatic Intelligent-2D-Section View™ is optimized for area of greatest interest and for orientation\*
- SmartPick™ automatically provides “highest”, “lowest”, “closest to”, “edge”, “flow line”, “line stripe”, and “ground” points\*
- Renowned Cyclone performance for managing large point cloud data sets
- Familiar survey coding, line & arc creation
- Direct export to survey CAD applications

\* Patents Pending



- when it has to be **right**

**Leica**  
Geosystems

# Leica Cyclone II TOPO

## Fast, Easy Mapping from Laser Scans... for Everyone!

### Virtual Surveying Made Fast and Easy

High-Definition Surveys produce dense laser scan data sets that give the appearance of a virtual site on a computer screen.

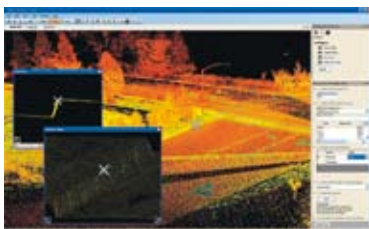
The benefits are evident:

- Extraordinary completeness
- Ability to map sites in the office without having to walk them in the field
- Imagery that provides additional QA
- Powerful visualization

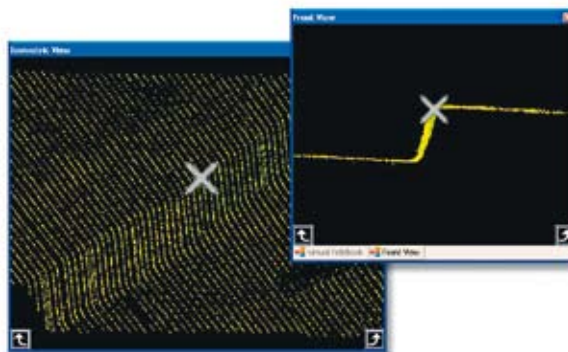
The challenge for survey CAD techs has been how to convert that virtual site comprised of 3D laser scan data into 2D mapping deliverables... efficiently, with confidence, and without having to be a 3D specialist. Next-generation Leica Cyclone II TOPO, developed by Leica Geosystems – the acknowledged industry leader, is the first software to squarely beat that challenge.

### Friendly, Familiar Viewing

Leica Cyclone II TOPO provides a breakthrough viewing environment. It lets survey CAD techs work in a familiar, map-like, top down 2D view, while automatically offering up auxiliary isometric and Intelligent-2D-Section Views™ of topographic interest. Now, moving around and finding what you want in point cloud data is managed automatically, making it fast and easy to learn. Familiar vertical exaggeration tools provide added confidence for ensuring accurate results.



### Mapping the Right Point



In addition to not having to rely on a rod-person to decide what points are collected, SmartPick™ tools help CAD techs automatically filter the exact laser scan points needed for the survey. Accurately locate edges of curbs, lowest/highest point in a region, or center of a painted line with Leica Geosystems quality assurance that you have the right point.

### Plug-and-Play Workflow

Cyclone II TOPO lets organizations leverage their existing mapping deliverable software, final map making workflows, and CAD tech experience.

- Directly import feature codes lists from XLS, TXT, and Leica GeoOffice files
- Use familiar feature coding methods to build a map-making list of coded points
- Export coded data to familiar CAD and code post processing tools for final map creation

### Leica Cyclone II TOPO Specifications

Leica Cyclone II TOPO Specifications		Hardware and System Requirements	
<b>Formats</b>	Import Code Lists: ASCII (.txt), DBX Import Control Data: ASCII (.txt) Export Coded Points: FBK, ASCII (.txt), DBX	Leica Cyclone II TOPO requires scan project data in a format that can be generated by any one of the Leica Cyclone modules. This includes the free Cyclone VIEWER module when installed with Leica Cyclone II TOPO software.	
<b>Point Selection Filters</b>	SmartPick™ automatically provides "highest", "lowest", "closest to", "edge", "flow line", "line stripe", and "ground" points* Points on grid: Automated selection inside fence area * Interpolated	<b>Operating System:</b> Windows Vista (32 or 64) or Windows XP (SP1 or higher) (32 or 64), or Windows 2000 (SP3 or higher with up to date security patches)	
<b>Visualization Features</b>	Horizontal and vertical cross-sections Vertical exaggeration Pan, zoom, rotate, tilt Automated auxiliary viewpoints with cross sections and 3D limit boxes Fly-through	<b>Computer Hardware:</b> 1 GHz Processor (or faster) 1 GB RAM (or more) OpenGL accelerated graphics card Mouse pointing device (wheel mouse suggested)	
<b>Survey Tools</b>	Feature Coding: Numbered and alphanumeric indexing, note and attribute support, multiple codes per point, linework coding management		

Windows is a registered trademark of Microsoft Corporation.  
Other trademarks and trade names are those of their respective owners.

Illustrations, descriptions and technical data are not binding. All rights reserved. Printed in Switzerland - Copyright Leica Geosystems AG, Heerbrugg, Switzerland, 2008. 763958enUS - 1.08 - RDV